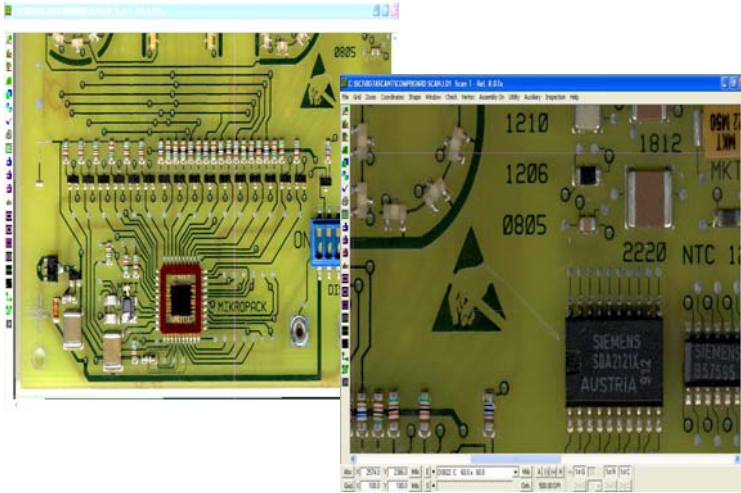


ScanEYE INSPECT™

Component Placement Inspection (CPI)



WHY USE ScanEYE INSPECT?

- **Mandatory:** 100% automatic inspection of components after placement or reflow.
- **Security:** Confirm component absence / presence.
- **Necessity:** Detect errors and fix root cause
- **Flexibility:** Inspect a wide variety component types.



WHAT IS ScanEYE INSPECT CPI?

ScanEYE INSPECT CPI provides a simple and user-friendly alternative to inaccurate and time-consuming manual component placement inspection methods or expensive, high-end AOI systems.

ScanEYE INSPECT CPI uses a simple Windows user interface integrated with an automatic table and image-processing unit. This combination allows 100% inspection of component placement on PCBs after placement or after reflow.

HOW DOES ScanEYE INSPECT CPI WORK?

ScanEYE INSPECT's integration within the production line provides 100% verification of absence / presence of components on PCB's.

Each PCB or substrate is removed after the placement machine or oven and placed into ScanEYE INSPECT CPI for 100% inspection. The PCB is then accepted and returned to the surface mount machines or rejected and reworked or scrapped. No more surprises!

QUICK & SIMPLE PROGRAMMING

ScanEYE INSPECT is quickly programmed from a golden board.

INCREASE YIELD & IMPROVE OVERALL EQUIPMENT EFFICIENCY

ScanEYE INSPECT CPI's powerful inspection process increases product yield by ensuring all components are placed. Thus, eliminating costly rework at later points in the process or warranty returns from products that do not work in the field.

Missing components are now automatically detected. Problems are detected and eliminated before the end of the line! Fix root cause of problem before many products are created with the same defect.

SIMPLICITY

ScanEYE INSPECT CPI set up is fast and easy. In production, each board is placed on the inspection table, manually shuttled in, and then automatically aligned and checked for accuracy with a PASS or FAIL inspection in seconds.



DESKTOP MODULE

System Specifications*

- Maximum Board Size: 18" X 24" (457mm X 610mm)
- Maximum Inspection Area: 16.5" X 22" (419mm X 559mm)
- Minimum Board Size: 1" X 1" (25.4mm X 25.4mm)
- Resolution: 200/300/400/600/800/1000/1600 dpi

PC Specifications

- Pentium (1GHz or higher) Personal Computer
- 60 GB HD, 512 MB RAM
- CD-ROM (CD-RW for archive purposes)
- Monitor (17" or larger)
- Win 98SE/Me/2000/XP – Requires: 2 available USB ports

Footprint of Inspection Unit

- Depth: 31.5" (800mm), table extended 49.5" (1,257mm)
- Width: 27.25" (692mm)
- Height: 19" (482mm)
- Weight: 150lbs. (55.95kg)

(All specifications and designs subject to change without notice.)



Partners: Avytechno Indonesia,
Techlogic Thailand, Westek Malaysia,
Tritronics Philippines, Utama Australia



AVI PRECISION ENGINEERING PTE LTD

1, KALLANG SECTOR #04-03, SINGAPORE 349276. TEL: 65 67483866 FAX: 65 67484810

Email: avipre@avipre.com.sg

Company Reg No: 199300584 M

Website: <http://www.avipre.com>

Skype: avipre